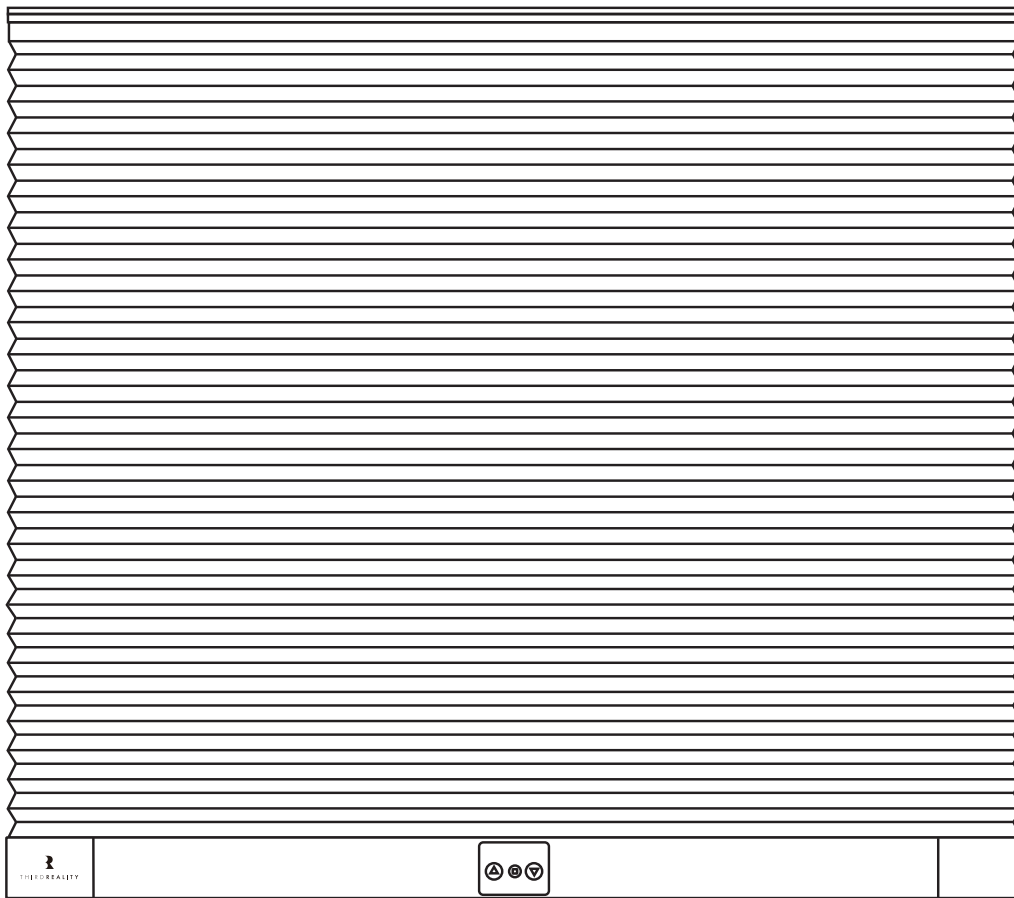


Smart Blind Gen2

User Manual



Contents

Product Instruction	01
Product Features	01
What's in the Box	03
Product Details	04
Installation	06
Local Using of Smart Blind Gen2	13
Pairing with Amazon Alexa	13
Pairing with SmartThings	18
Pairing with Third Reality	20
Pairing with 3R-Installer App	23
Pairing with Hubitat	25
Pairing with Home Assistant (ZHA)	28
Pairing with Home Assistant (Z2M)	31
Troubleshooting	34
FCC Regulatory Conformance	38
RF Exposure	39
Limited Warranty	39

Product Instruction

The Smart Blind Gen2 is a customizable smart blind available in widths ranging from 33 to 80 inches. Powered by four C2 rechargeable lithium batteries (Batteries are included) Designed with the Zigbee protocol, it's compatible with various platforms and, with the Third Reality Bridge, can also integrate seamlessly with matter platform. Made with an aluminum alloy design, it offers excellent heat insulation, noise reduction, and motion resistance, making it a versatile and durable choice for any space.

Product Features

① Directly work with compatible Echo devices and multiple platforms

Smart Blind is a standard Zigbee device. It can directly work with compatible Echo devices with Zigbee hub built-in (including Echo 4th Gen, Echo Plus 1st Gen and 2nd Gen, Echo Show 10 2nd Gen and 3rd Gen and Echo Studio). Smart Blind can also connect with SmartThings Hub 2015/2018/Station, Aeotec, Home Assistant (ZHA/Z2M), Eero 6 & Eero 6 Pro, Third Reality Hub/Bridge and Hubitat Elevation.

② Unique and novel design

Smart blind uses bottom drive design, which makes daily operation more convenient and easier to replace the battery. With the design of bottom sensor, it's easier and more convenient to adjust the height of the blind within 74-inch at any time.

③ Battery information

This curtain uses a C2 rechargeable lithium battery. Please ensure the battery is fully charged before use. After fully charging the battery, as a general guide, it requires recharging every 6 months for once-daily use, or every 3 months for twice-daily use, and so on.

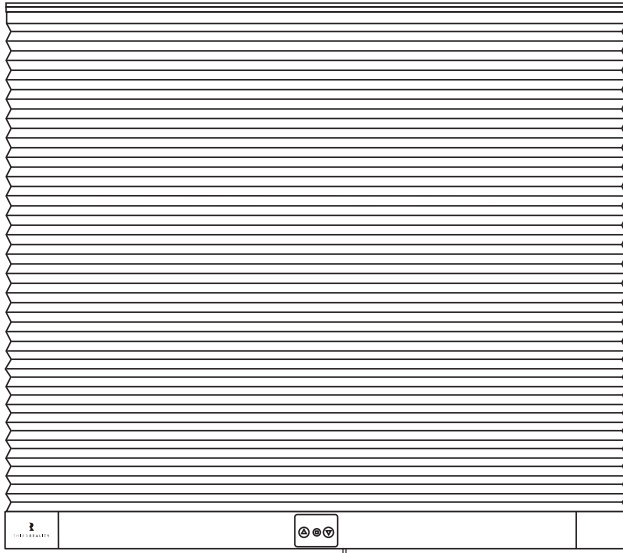
④ Functions provided by automation

Smart Blind works has multiple functions, including schedule, group and routine. Set your blind on or open according to the sunset or sunrise time, etc.

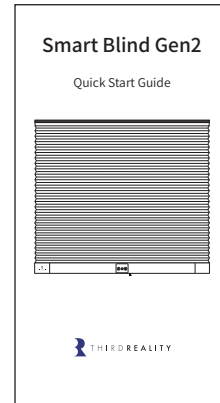
⑤ Good shading and cordless design

Non-woven fabric with aluminum foil provides good thermal insulation and noise absorption, as well as privacy protection and light control, which makes it an ideal indoor window treatment for bedroom, living room, patio sliding door etc. Cordless design makes it safe for children and pets.

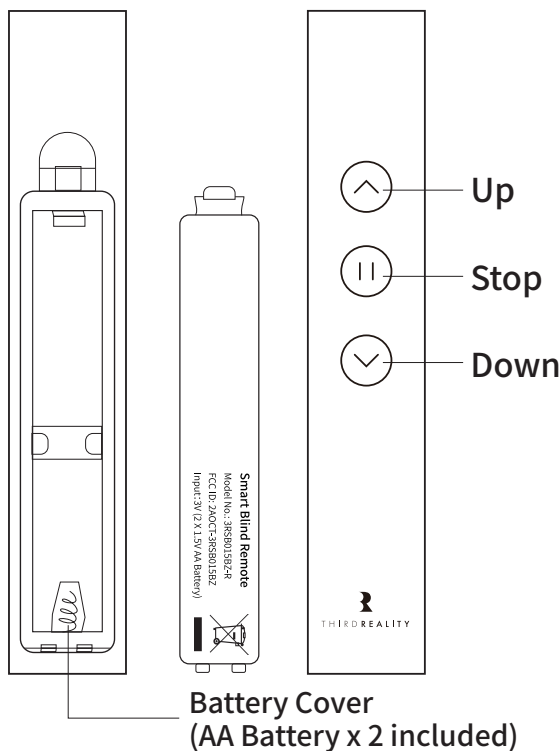
What's in the Box



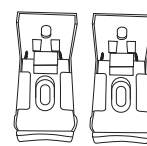
Smart Blind Gen2 × 1



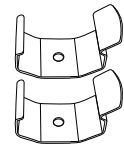
Quick Start Guide × 1



Smart Blind Remote × 1

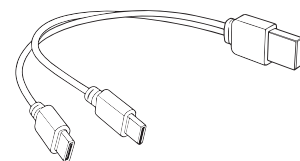


L Bracket × 2

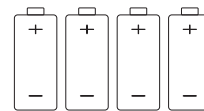


U Bracket × 2

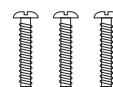
(33-39 in: 2; 40-59 in: 3; 60-80 in: 4)



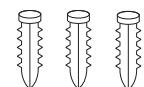
One-to-two USB Type-C Cable × 2



C2 × 4



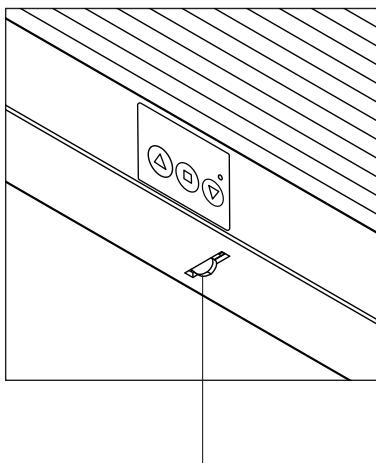
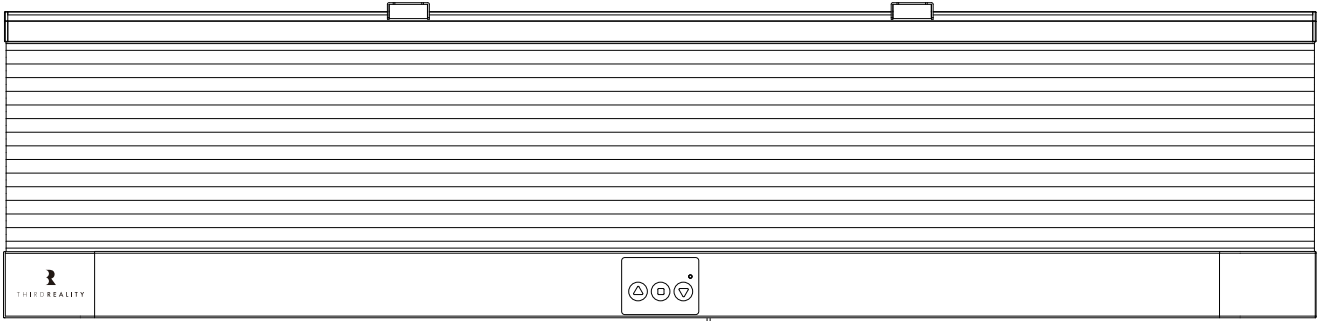
Screw × 3



Plastic Expansion Bolt × 3

Bolt × 3

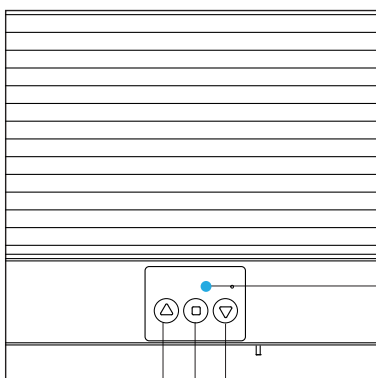
Product Details



Bottom Sensor

Bottom Sensor

When the Smart Blind is extending if the Bottom Sensor hits any surface (like the window sill or your finger) , it will stop at this position. The Bottom Sensor is also used to "Set the position where you want the bottom of your Smart Blind to rest".



**LED
Indicator**

**Up
Setting/Stop
Down**

Buttons

Buttons	Actions	Functions
Up	Short press	Curtains up
Set/Stop	Short press	Stop
	Long press more than 5s	Restore factory settings and re-enter pairing mode.
Down	Short press	Curtains down
	Long press	The curtains continue down to the bottom.
Up+Down	Long press more than 3s	The device enters manual calibration mode: After releasing the hand, press Up or Down to adjust the motor to move up and down.
bottom sensor	Hold the bottom sensor with your finger, press DOWN, release DOWN first, then release the bottom sensor.	Set Bottom Position Function

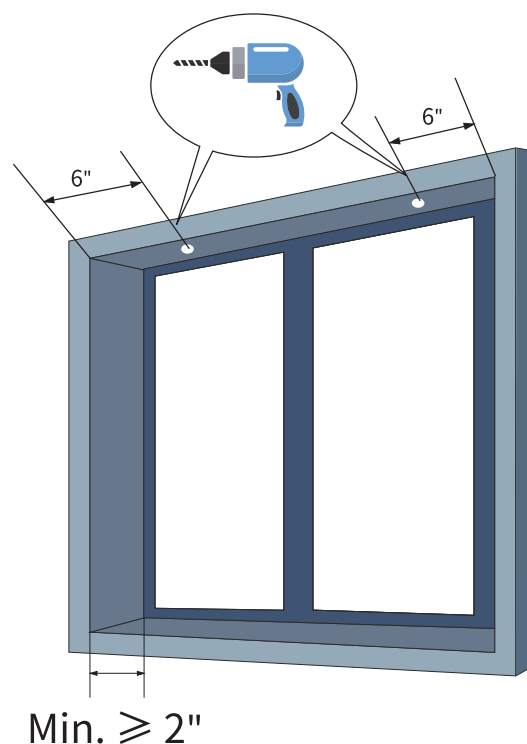
LED Status

Device Status	LED Status
Pairing	Blue blinking
Low Battery	Red double blinking
Offline	Red slow blinking
Factory Reset	Press and hold the Set button for 5 seconds until the red light turns on. Release the button, and the device will restart.
Manual Calibration Mode	Press and hold Up+Down for 3 seconds until the blue light turns on, then release it.

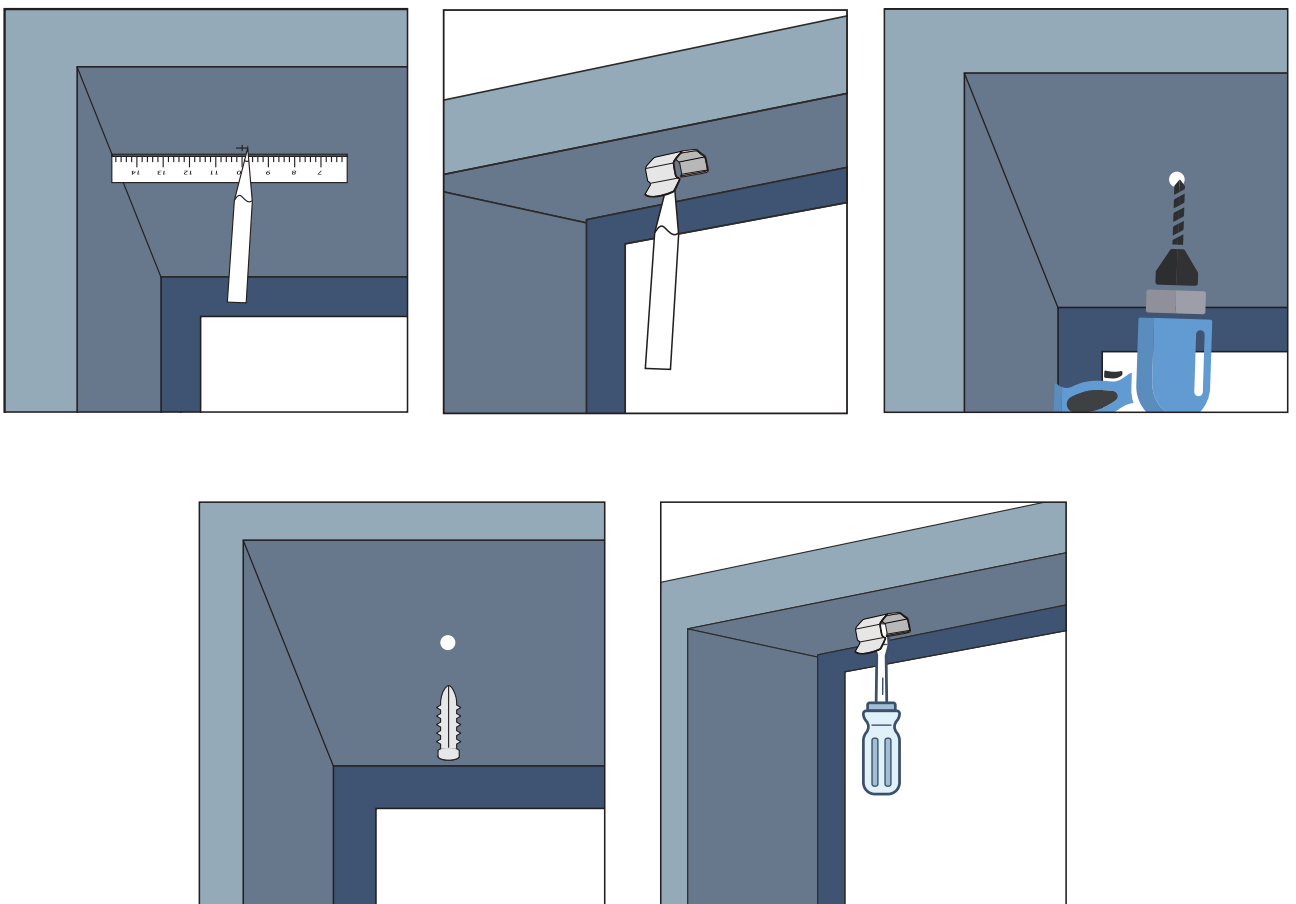
Installation

THIRDREALITY Smart Blind Gen2 supports both inside and outside mount, a pair of L brackets and a pair of U brackets, screws and plastic expansion bolts are provided. Please prepare a PH2 screwdriver for the mount; For masonry surface please prepare an electric drill with an 6 mm drill (15/64) bit. Make sure the THIRDREALITY logo of the Smart Blind and the button of the L brackets or the flange of the U brackets face in when installed.

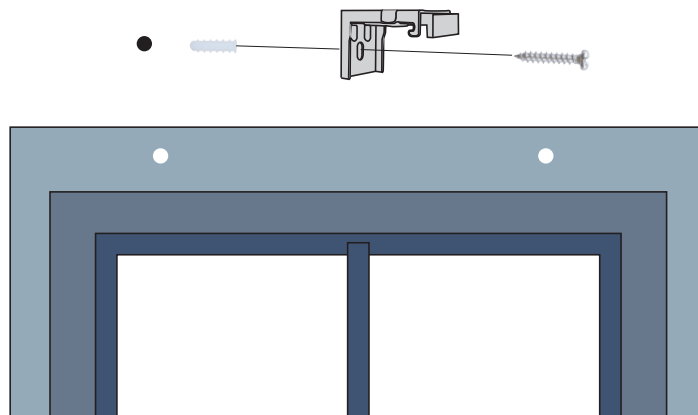
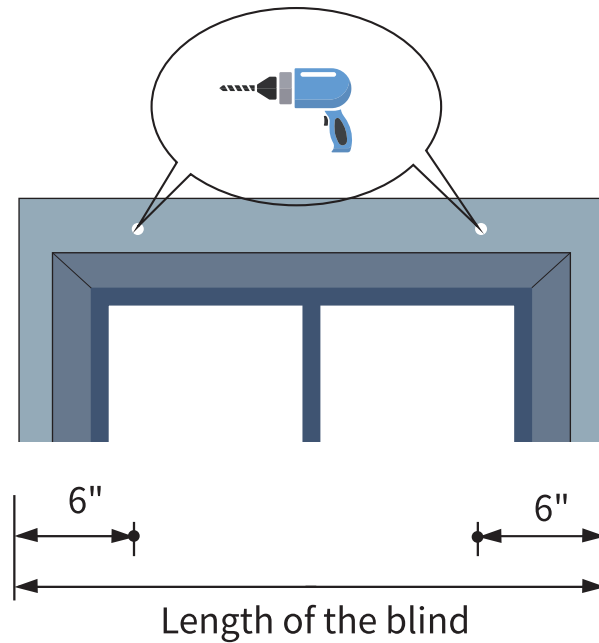
- 1 Choose inside or outside mount as needed. Make sure your window recess meets the minimum depth requirement of 2" for inside mount. For outside mount, if you want to expose the whole window when the smart blind is fully closed, make sure you have at least 4.3" of flat space above the window.
 - a. inside Mount



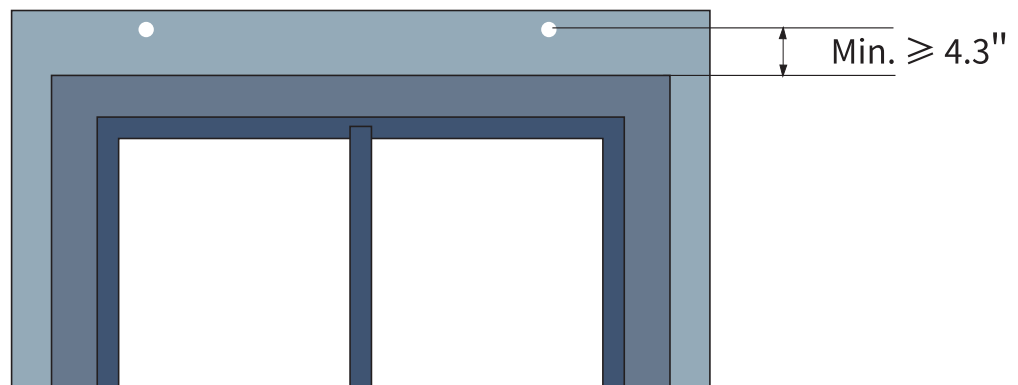
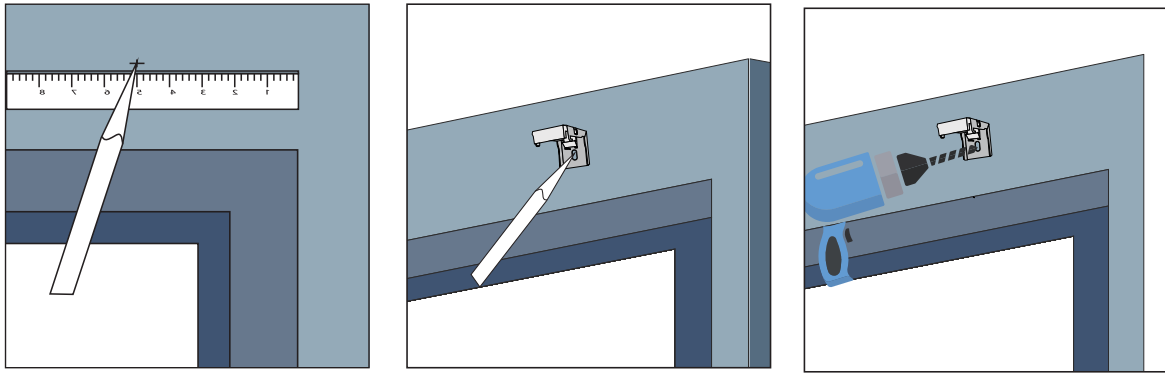
- According to the diagram, measure and mark the position.
- For wooden surface use a PH2 screwdriver and the provided screws to secure the bracket.
- For masonry surface use a 6 mm drill (15/64) bit to drill a pilot hole for the provided plastic expansions bolt. Insert the plastic expansion bolt into the pilot hole, then use a PH2 screwdriver to secure the bracket with the provided screw.



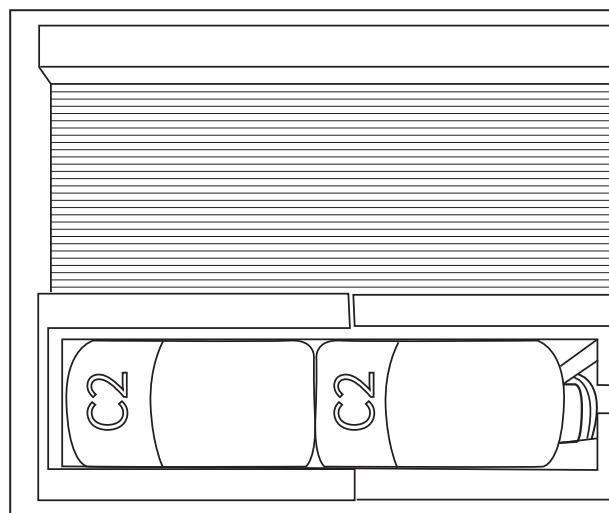
b. Outside Mount



- For wooden surface use a PH2 screwdriver and the provided screw to secure the bracket.
- For masonry surface use an 6 mm drill (15/64) bit to drill a pilot hole for the provided plastic expansion bolt. Insert the plastic expansion bolt into the pilot hole, then use a PH2 screwdriver to secure the bracket with the provided screw.
- Insert the plastic expansion bolt into the hole, then use a PH2 screwdriver to fasten the bracket with the provided screw.



- 2 Open the battery covers on both sides of the bottom back of the curtain bottom, pull out the insulating sheet, and remove the four C2 batteries. Use a Type-C cable to charge the batteries. Once fully charged, install the batteries and close the battery covers.



3 How to charge the battery

Connect the cable to the battery and an appropriate USB power charger (mobile phone adapter, power bank, car charger, etc.). You can charge several batteries at the same time. When charging, the light blink; when it is full, the light remains on.

These rechargeable batteries are pre-charged (30%) and ready to use straightly from the box. They will hold a full charge for up to 12 months when not in use. Recharge it before use if standby over 3 months.

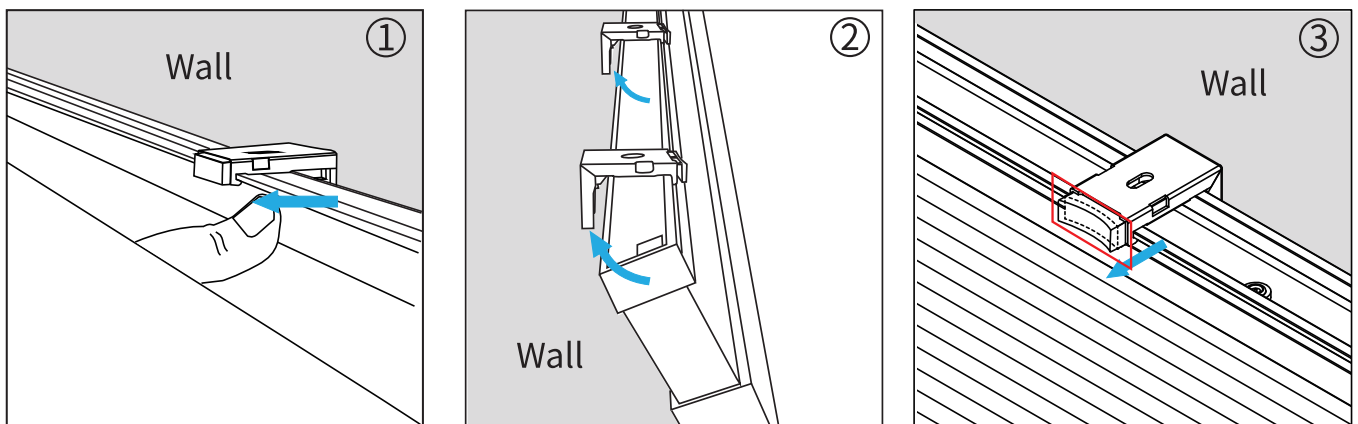
Note:

- It is recommended to use a safety-certified adapter (such as CE, FCC, UL) to charge the battery.
- Keep out of reach of children.
- Insert correctly, observing the polarity markings (-/+).
- Do not mix with any other type of battery.
- Do not disassemble.
- Do not dispose of in a fire.
- Do not leave unattended while charging.
- Disconnect when fully charged.
- Do not charge the battery with the charging case.
- Do not use the battery if battery's wrapper is damaged.
- Do not keep your battery in a pocket, purse or other receptacle containing metal objects to avoid short-circuit, incinerate or expose to water, fire or high temperatures above 45°C.
- Do not use this battery for camera flashlights and strong light flashlights, it will cause the battery to heat up.

- Failure to follow these safety instructions could result in fire, electric shock, injury or damage to persons, product or property and will invalidate the guarantee.

4 Outside Mount/inside Mount

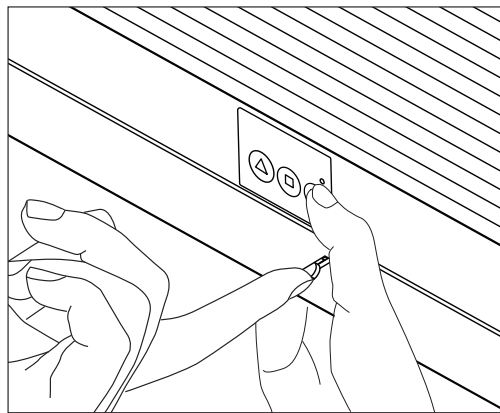
Outside Mount: Firstly align the outside of the top rail with the brackets, then push up the smart blind to get it into place. The bracket's button pops up and makes a clicking sound, indicating it is secured. To uninstall the smart blind, push the button of the brackets and then pull down the smart blind, Inside Mount: Firstly align the inside of the top rail with the brackets, then push up the smart blind to get it into place. To uninstall the smart blind, push the outside of the brackets and then pull down the smart blind.



Note: Please shake the blind to ensure the blind and the Extension Bracket are in close contact.

5 Set the position where you want the bottom of your Smart Blind to rest

Press the UP button and let the Smart Blind retract to the highest position, now the Smart Blind returns to the original zero percent. Press the DOWN button to let the Smart Blind extend, stop the bottom rail at your desired position by pressing the setting/stop button. Now hold up the bottom sensor with your finger first, then press the DOWN button, after that release the DOWN button first, then release the bottom sensor, now you have set this position as the preset bottom position, the Smart Blind will stop at this position automatically next time when extending. Note: Press and hold the DOWN button on the smart blind for 5 seconds to clear the currently set bottom position.



Local Using of Smart Blind Gen2

Optimum height:

The height of our Third Reality Smart Blind supports 74 inches at maximum.

Local Control:

You can use the remote or 3 control buttons on the bottom rail to control the Smart Blind.

Pairing with Different Brands

Pairing with Amazon Echo

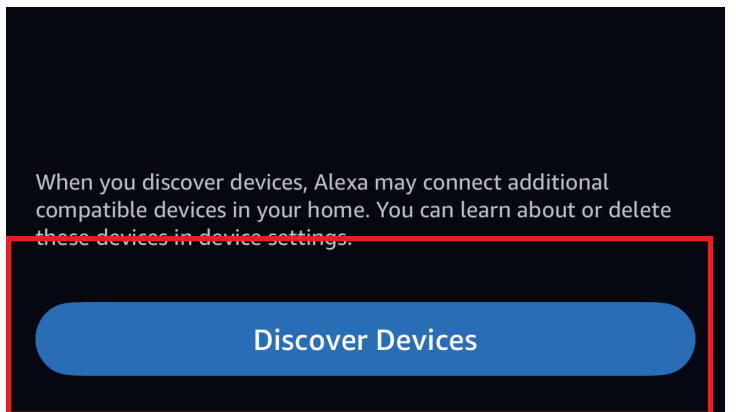
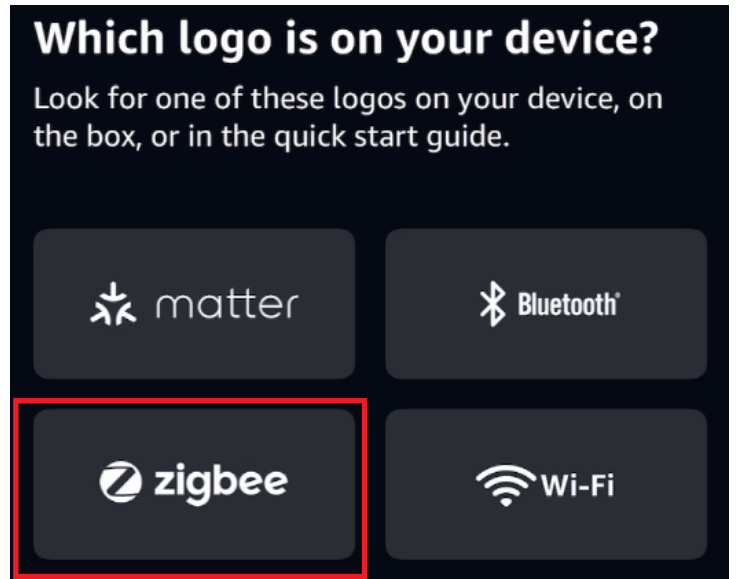
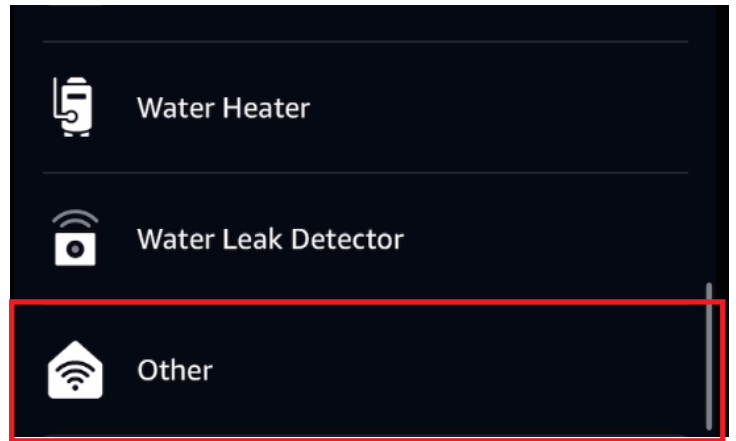
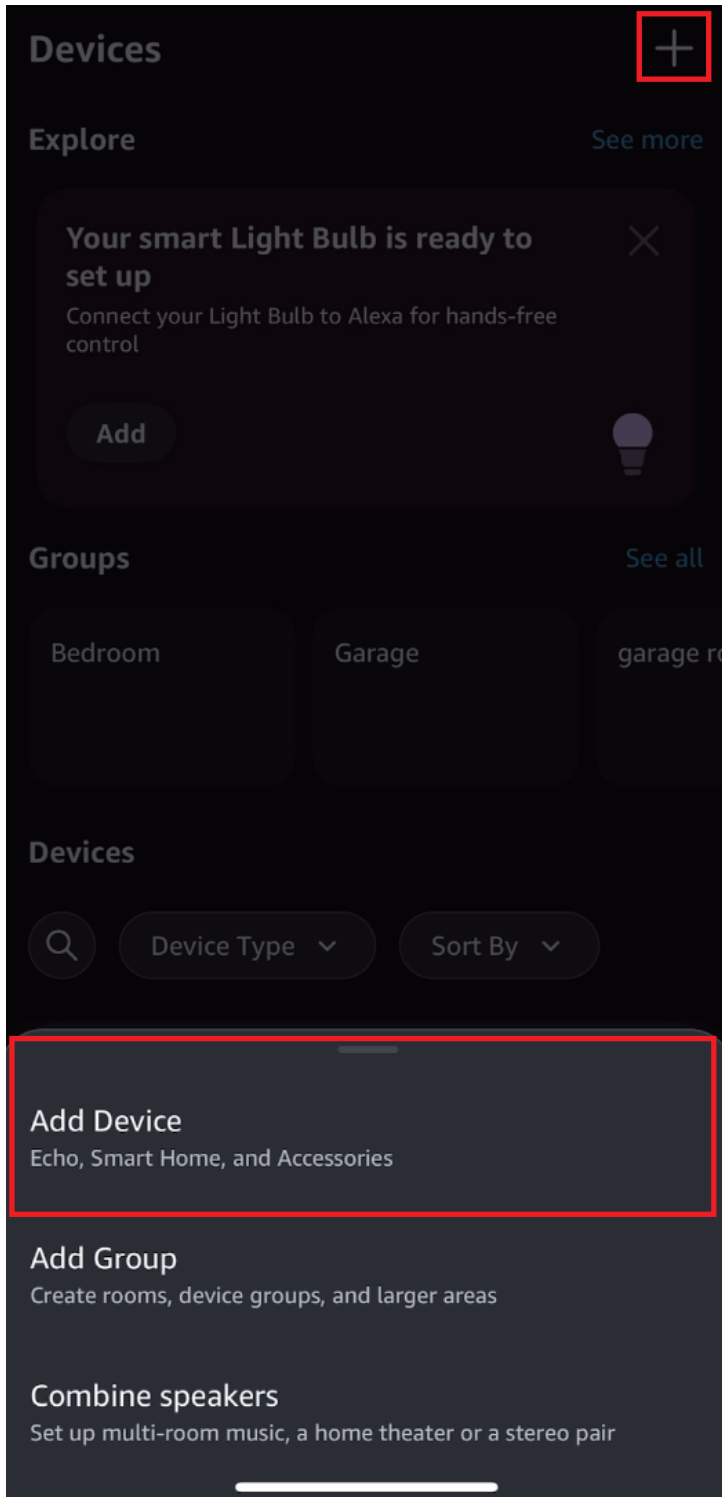
Compatible Devices: Echo V4, Echo Plus V1 & V2, Echo Studio, Echo Show 10 Gen2 & Gen3

App: Amazon Alexa App



Pairing Steps:

1. Long press the setting button of blinds for more than 5 seconds until the LED light flashes rapidly in red, indicating that the Smart Blind is in pairing mode.
2. Before pairing, make sure the Echo devices have been updated to the latest version, Then directly say "Alexa, discover my devices". Or you can open Alexa App, go to device page, tap "+" on top right, choose "Add Device", then click "other" by sliding down, tap "DISCOVER DEVICES" , wait for few seconds, the Smart Blind will be paired to Alexa.
3. After the pairing is successful, you can control the blinds by voice and App.





1 Other other found and connected

Your other has been added to your Alexa account. Next, we'll help you finish setting up your device.

Next



First blind is set up and ready to use

To control it, say

"Alexa, turn off First blind"

Done

Devices



Device Type ▾

Sort By ▾



First blind

On



Smart Color Bulb ZL4

• Device is unresponsive



First blind



Opening

0 Percent



Create a Routine



Using Smart Blind Gen2

Optimum height:

The height of our Third Reality Smart Blind supports 74 inches at maximum.

Voice Control:

- "Alexa, turn on /off first blind."
- "Alexa, set / turn on / turn off / turn up /turn down /open/close first blind to 50%."

Routines:

You can create routines in your Alexa App to turn on/off the Smart Blind or set any open percentage, for example you can create a routine with a motion sensor as a trigger to open the Smart Blind when you enter the room, or you can create a routine to open/close your Smart Blind at sunrise/sunset.

Note: A voice command "Alexa, turn on first blind." cannot be interrupted by a voice command "Alexa, turn off first blind." vice versa.

A voice command "Alexa, set first blind to 80%." can be interrupted by another voice command "Alexa, set first blind to 20%"

Pairing with Eero

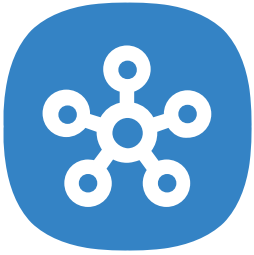
Compatible Devices: Eero 6 & Eero 6 Pro

App: Eero App Alexa App

Pairing Steps:

1. Make sure that the Eero App account is logged in and the gateway is properly connected.
2. Open Alexa App and register your account, then enable Eero Skill to Alexa App.
3. Long press the setting button of blinds for more than 5 seconds until the LED light flashes rapidly in red, indicating that the Smart Blind is in pairing mode.
4. Before Pairing, make sure the Echo devices have been updated to the latest version, then directly say "Alexa, discover my devices". Or you can open Alexa App, go to device page, tap "+" on top right, choose "Add Device", then click "other" by sliding down, tap "DISCOVER DEVICES", wait for few seconds, the smart blinds will be paired to Alexa.
5. After the pairing is successful, you can control the blinds by voice and App.

Pairing with SmartThings

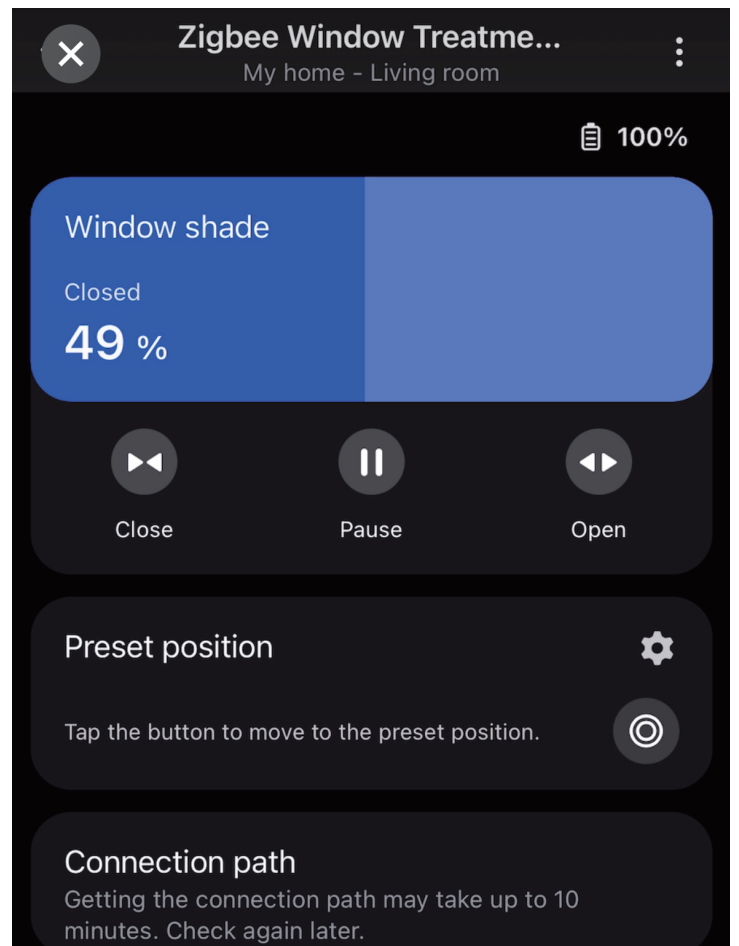
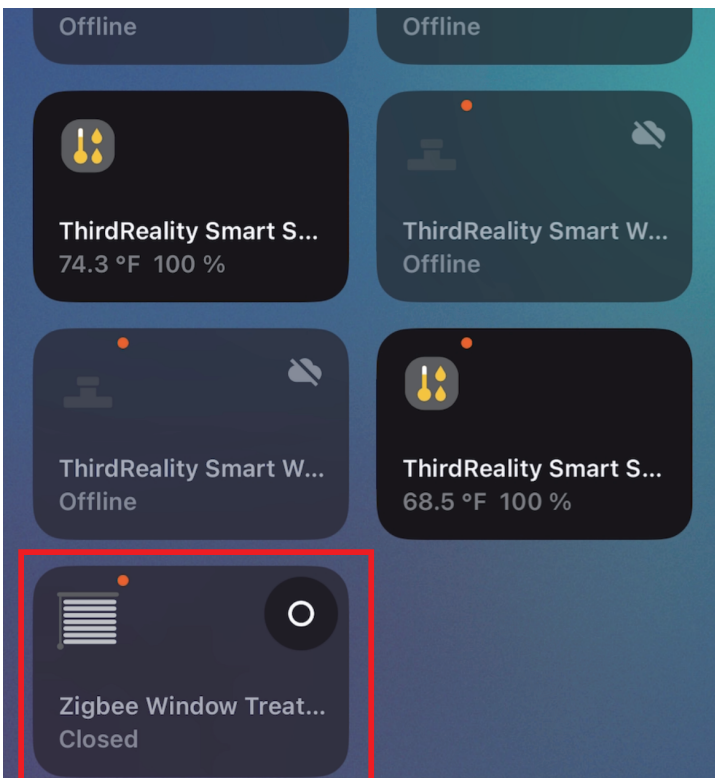
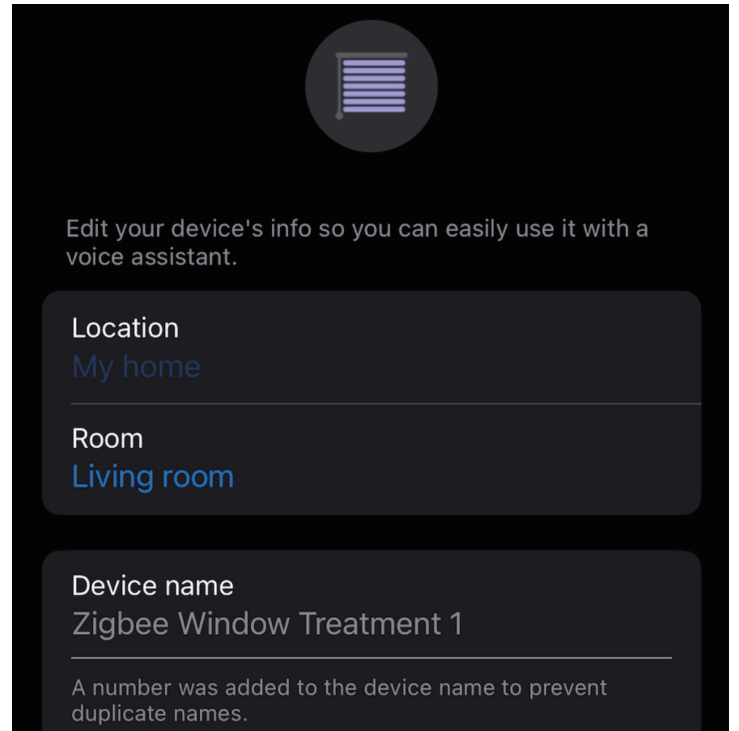
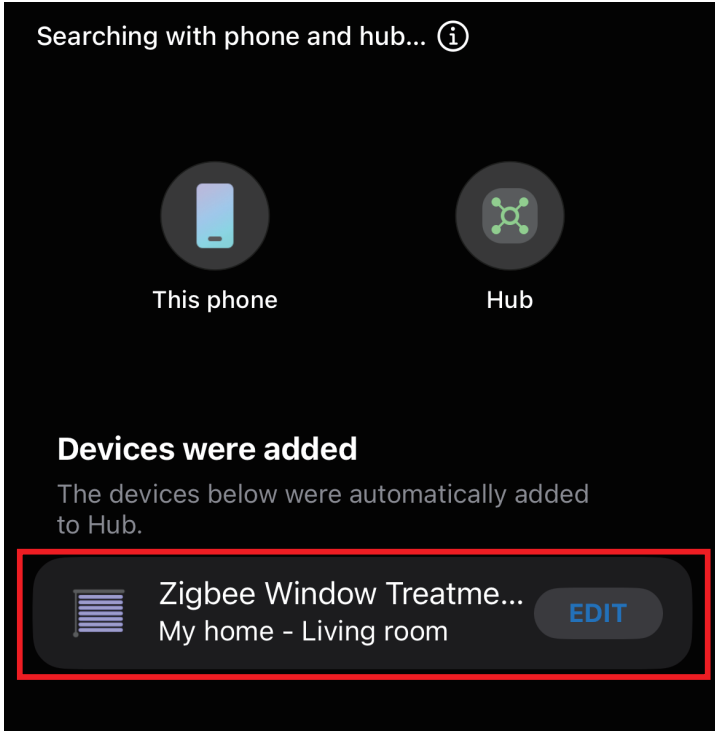
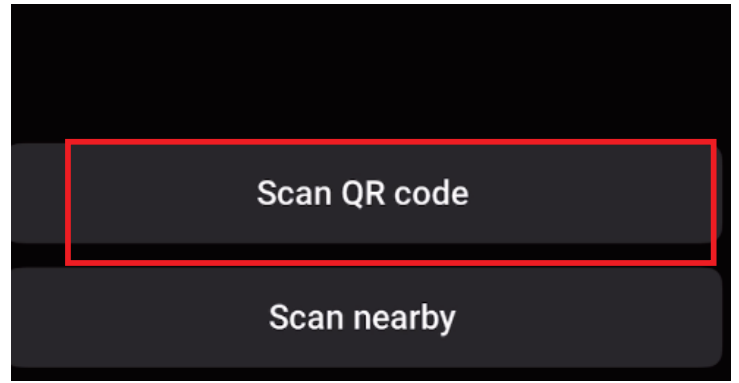
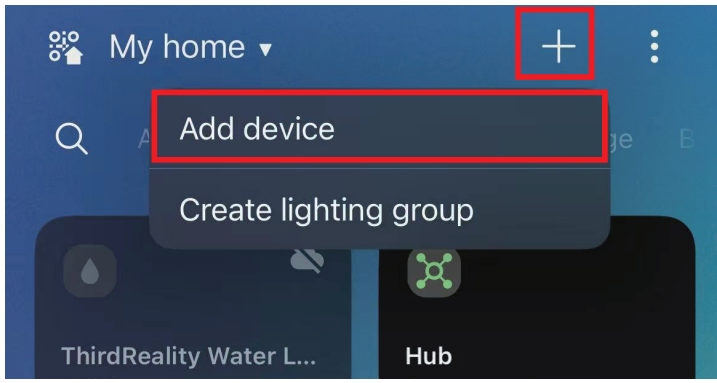


Compatible Devices: SmartThings Hub 2015/2018/Station, Aeotec

App: SmartThings App

Pairing Steps:

1. Long press the setting button of blinds for more than 5 seconds until the LED light flashes rapidly in red, indicating that the Smart Blind is in pairing mode.
2. Open SmartThings App, tap "+" on top right. Then click "Add Devices", Choose "Scan nearby".After the pairing is successful, it will be displayed as "Third Reality Smart Blind" on the page.
3. You can control the smart Blind in its details page now.
4. You also can make your Smart Blind smarter by adding automations in the SmartThings App.



Pairing with Third Reality



Zigbee Hub Prepare: Third Reality Smart Hub

App: Third Reality App

Pairing Steps:

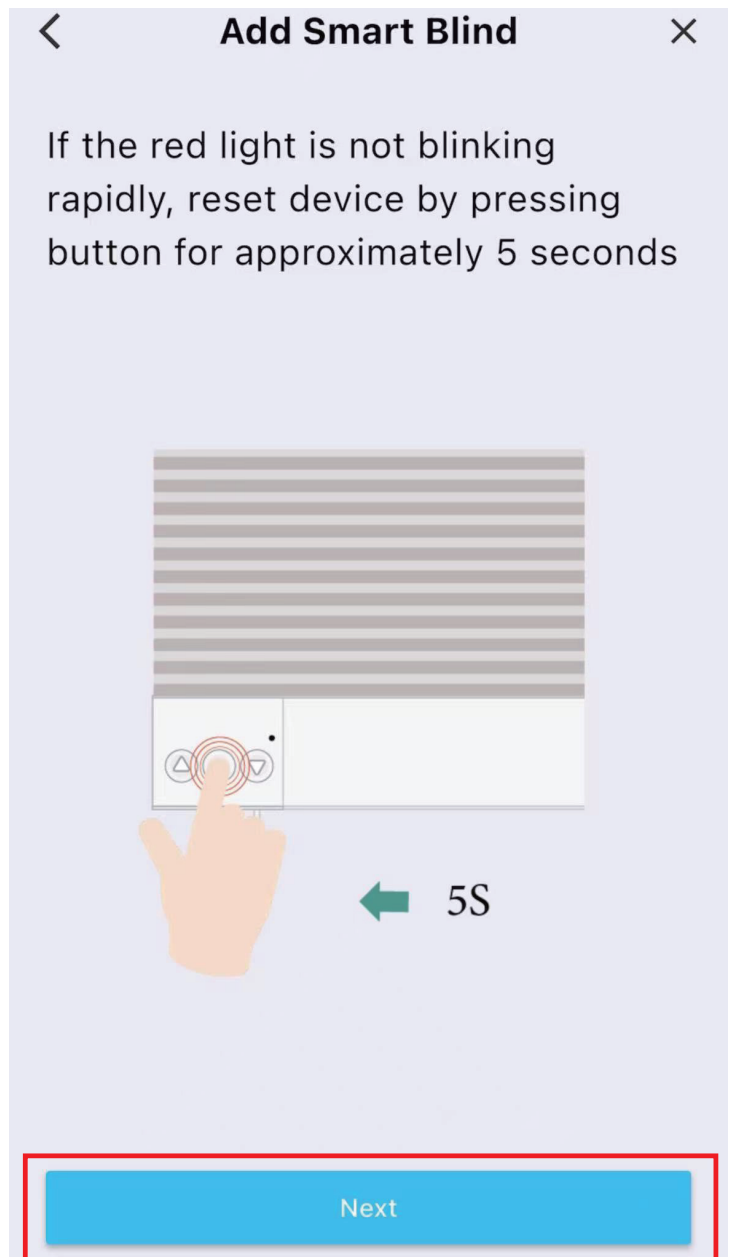
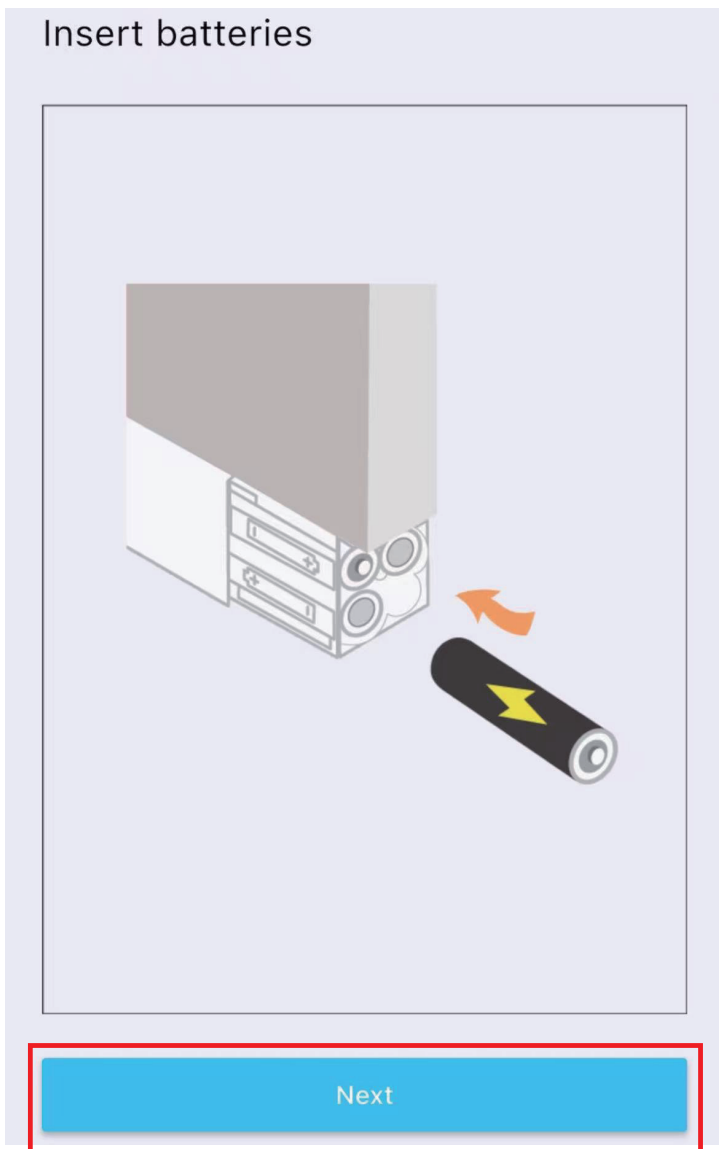
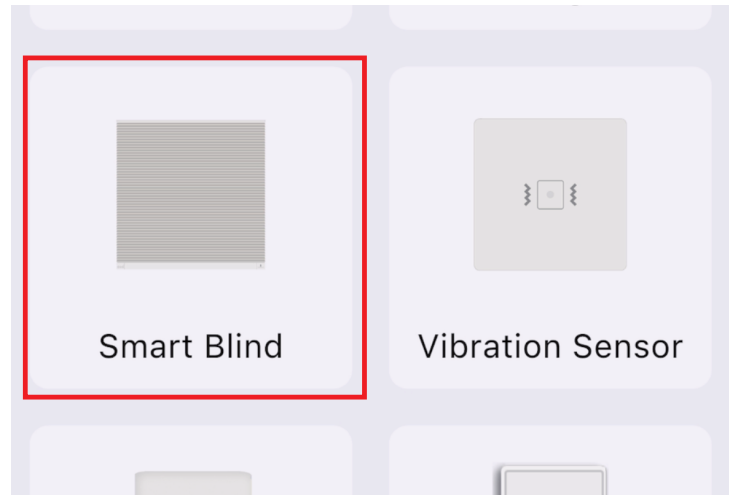
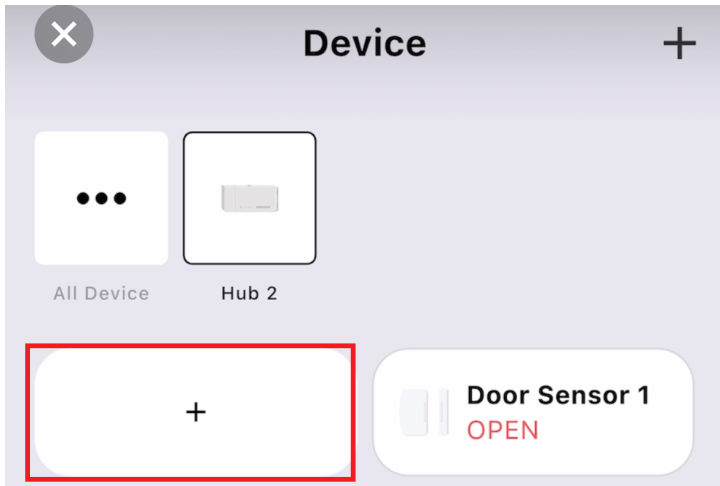
1. Long press the setting button of blinds for more than 5 seconds until the LED light flashes rapidly in red, indicating that the Smart Blind is in pairing mode.
2. Open Third Reality App, go to device page, tap "+" belongs to the Hub, choose "Smart Blind", then click "Pair".
3. After the pairing is successful, tap "Complete", then back to main interface.
4. Tap "Smart Blind" icon on device page, you can see the details, such as Battery, History Records and etc. Follow the instructions to control Smart Blind.

Using Smart Blind Gen2

Enable Alexa Skill:

After adding the Smart Blind to your Third Reality Smart Hub, enable Third Reality Skill and tap "DISCOVER DEVICES" in your Alexa App, now you can use the voice assistant or to create routines in your Alexa App to control the Smart Blind.

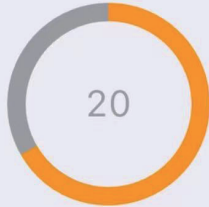
Notes: You can also set the curtain cycle on the device details page based on its size. Curtains from 33 to 60 inches can be set to about 300 cycles, and those from 61 to 80 inches can be set to about 200 cycles.



Add Smart Blind



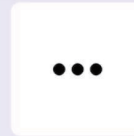
Pairing in progress. The LED on the device may change - this is normal



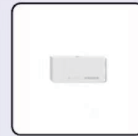
- ✓ Network of the mobile phone is connected
- ✓ Hub 2 is connected
- ✓ Hub 2 is in pairing mode

Smart Blind Gen2 1

Complete



All Device



Hub 2

+



Smart Blind G...

0 %



Door Sensor 1

OPEN



Soil Moisture ...

Disconnected



Smart Blind

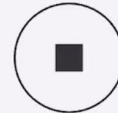
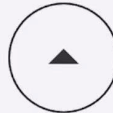


LEVEL 17 %

25 %

50 %

75 %



Name

Smart Blind Gen2 1 >

Network

Connected

Type

Smart Blind Gen2

Mac

282C02BFFFEBC79

Pairing with 3R-Installer App



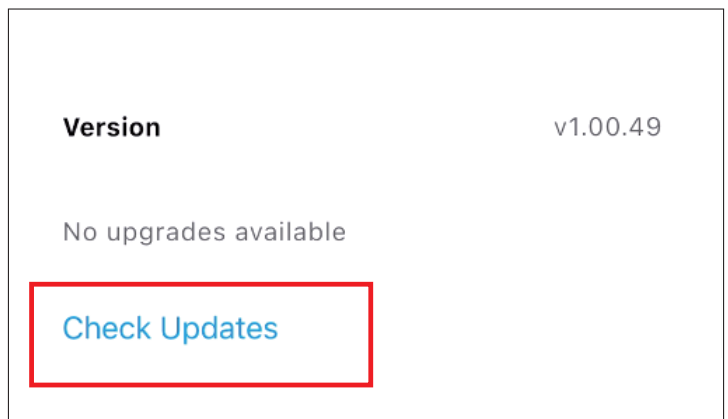
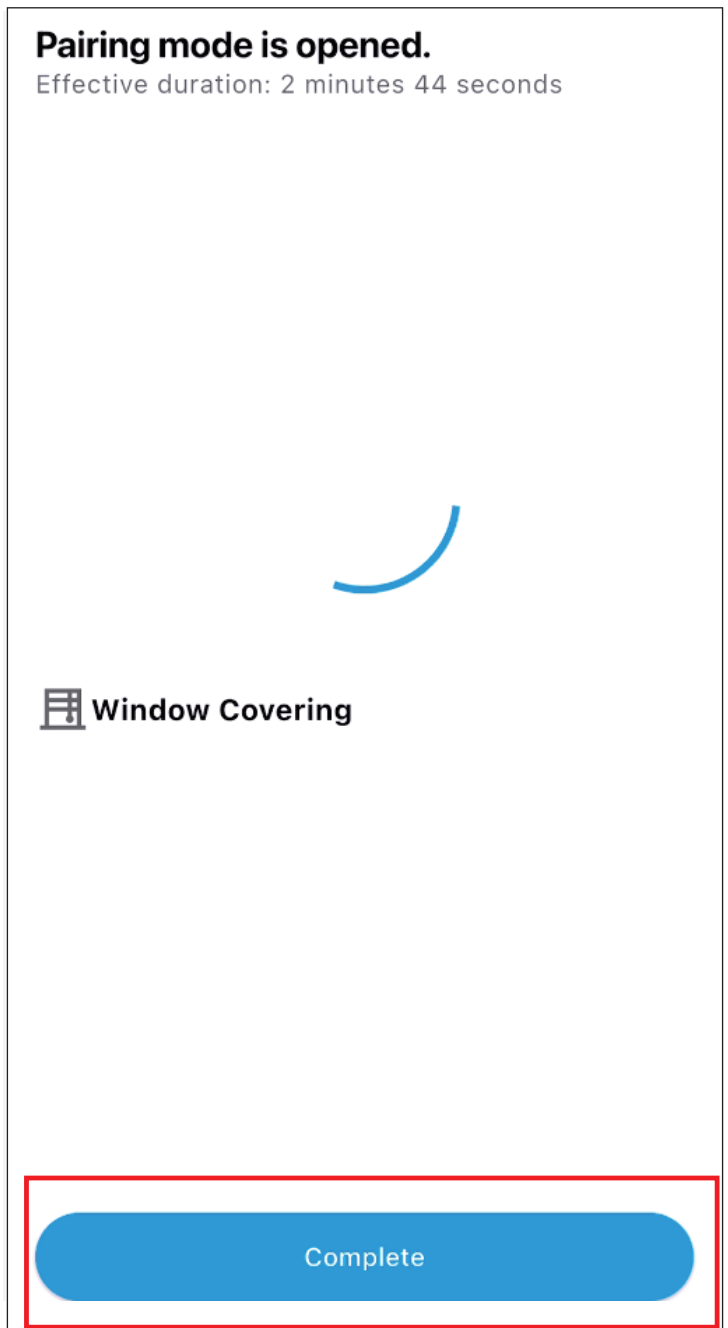
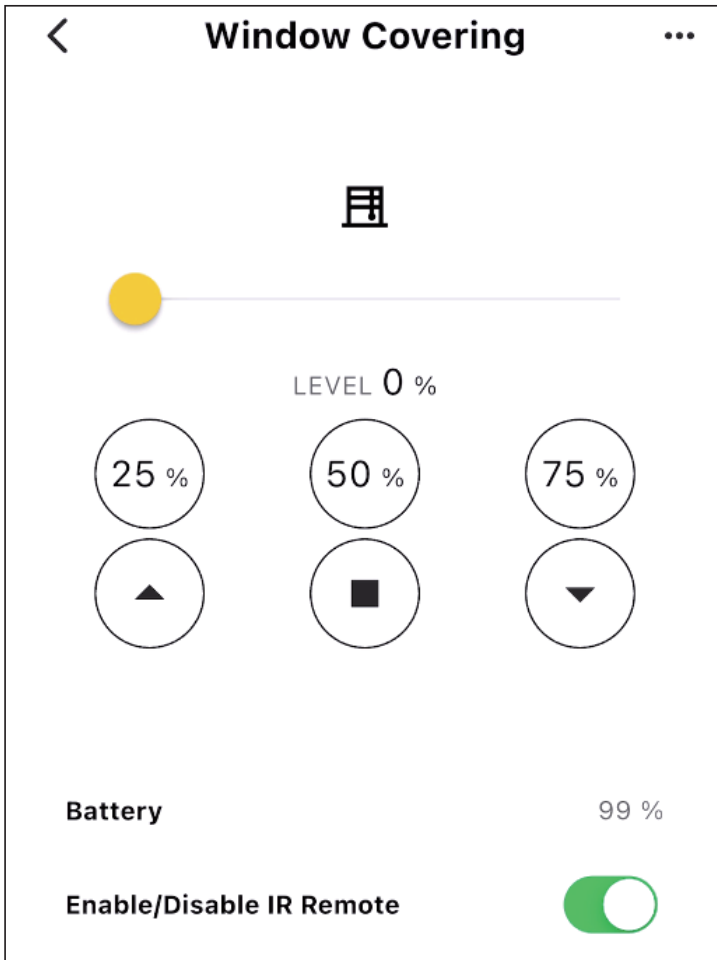
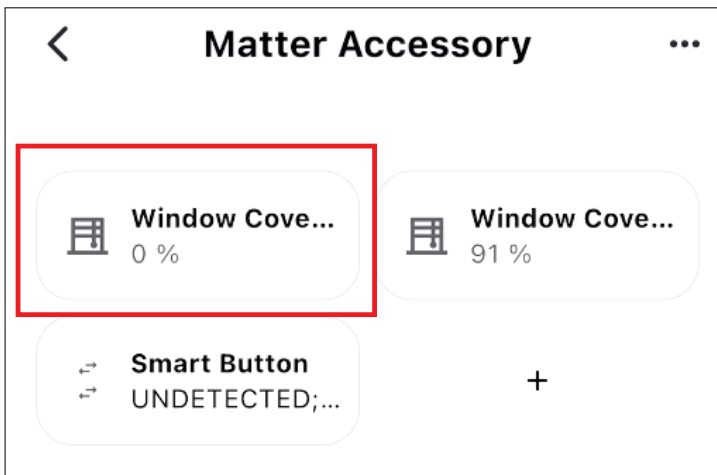
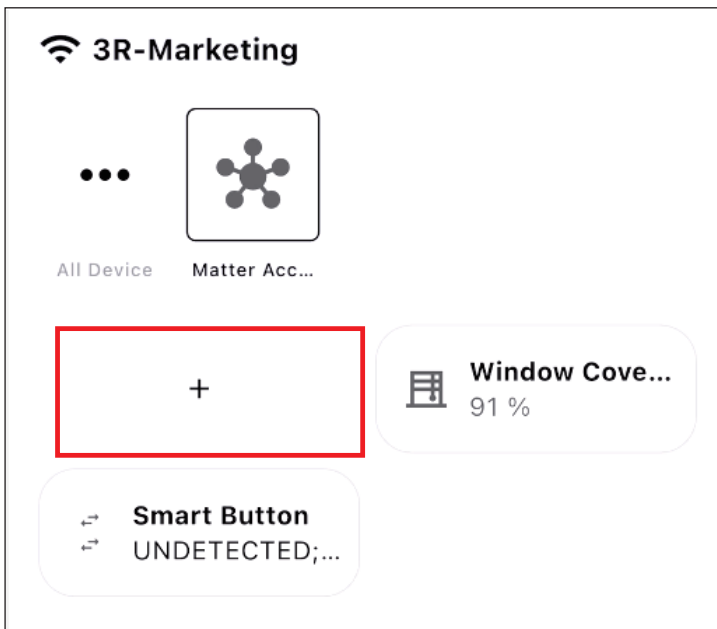
Device: Smart Bridge MZ1

App: 3R-Installer App

Pairing Steps:

1. Open 3R-Installer App, Ensure your bridge is already set up within your smart home system.
2. Long press the setting button of blinds for more than 5 seconds until the LED light flashes rapidly in red, indicating that the Smart Blind is in pairing mode.
3. The blind will pair with the bridge, and a new device will appear in your smart home app.
4. After the pairing is successful, tap "Complete", then back to main interface.
5. Tap "Smart Blind" icon on device page, you can see the details, such as Battery, History Records and etc. Follow the instructions to control Smart Blind.

Notes: You can also set the curtain cycle on the device details page based on its size. Curtains from 33 to 60 inches can be set to about 300 cycles, and those from 61 to 80 inches can be set to about 200 cycles.



Pairing with Hubitat



Website: <http://find.hubitat.com/>

Pairing Steps:

1. Long press the setting button of blinds for more than 5 seconds the LED light flashes rapidly in red, indicating that the Smart Blind is in pairing mode.
2. Log in the website, click "Connect to Hub".
3. After pairing with Hub, choose "Devices", then click "Discover Devices", Tap "Zigbee", Choose "Start Zigbee Pairing".
4. After the pairing is successful, it will shows on page as "ThirdReality Smart Blind". Click "Label" to rename the Smart Blind and then tap "save".
5. Go to the Device page, you will see the Smart Blind and then click in, you will see the controlling buttons of "Close"、"Open"、"Set Level"、"Pause".

Hubitat **Devices** hubitat-c7

Compatible device list X Clear Search... **+ Add device**

Disable ↑↓	Label (Name) ↑↓	Type ↑↓	Room ↑↓	Source ↑↓	DNI ↑↓	Status ↑↓	Last Activity ↑↓	
<input type="checkbox"/>	1 <small>(Advanced Zigbee CT Bulb)</small>	Advanced Zigbee CT Bulb		System	2EA3 B40ECFD298B00000		8/27/2024 10:42:35	
<input checked="" type="checkbox"/>	1111 <small>(Device)</small>	Device	huan	System	1315 282C02BFFFE909D1			
<input type="checkbox"/>	729ms <small>(Generic Zigbee Motion Sensor (no temp))</small>	Generic Zigbee Motion Sensor (no temp)		System	8439 282C02BFFFE6379		7/29/2024 15:44:55	60
<input type="checkbox"/>	Advanced Zigbee CT Bulb	Advanced Zigbee CT Bulb		System	1AED B40ECFD32AA00000		8/27/2024 10:42:28	
<input type="checkbox"/>	del <small>(Third Reality Smart Button)</small>	Third Reality Smart Button		System	5A05 282C02BFFFE38F45		8/06/2024 13:42:54	100
<input type="checkbox"/>	Plant Watering System	Generic Zigbee Switch		System	4F31 282C02BFFFE900C0		8/27/2024 10:13:02	
<input type="checkbox"/>	Smart Soil Moisture Sensor <small>(Device)</small>	Generic Zigbee Temperature/Humidity Sensor		System	952B A4C138EED8829E73			

Documentation Community Videos FAQ Terms of Service Copyright 2018-2024 Hubitat, Inc

Hubitat **Add device** hubitat-c7

Find by device type
Bulbs, dimmers, locks, outlets, switches... ▶

Find by brand
Aeotec, Bosch, Centralite, Dome, Ecolink... ▶

Add device manually:

Zigbee

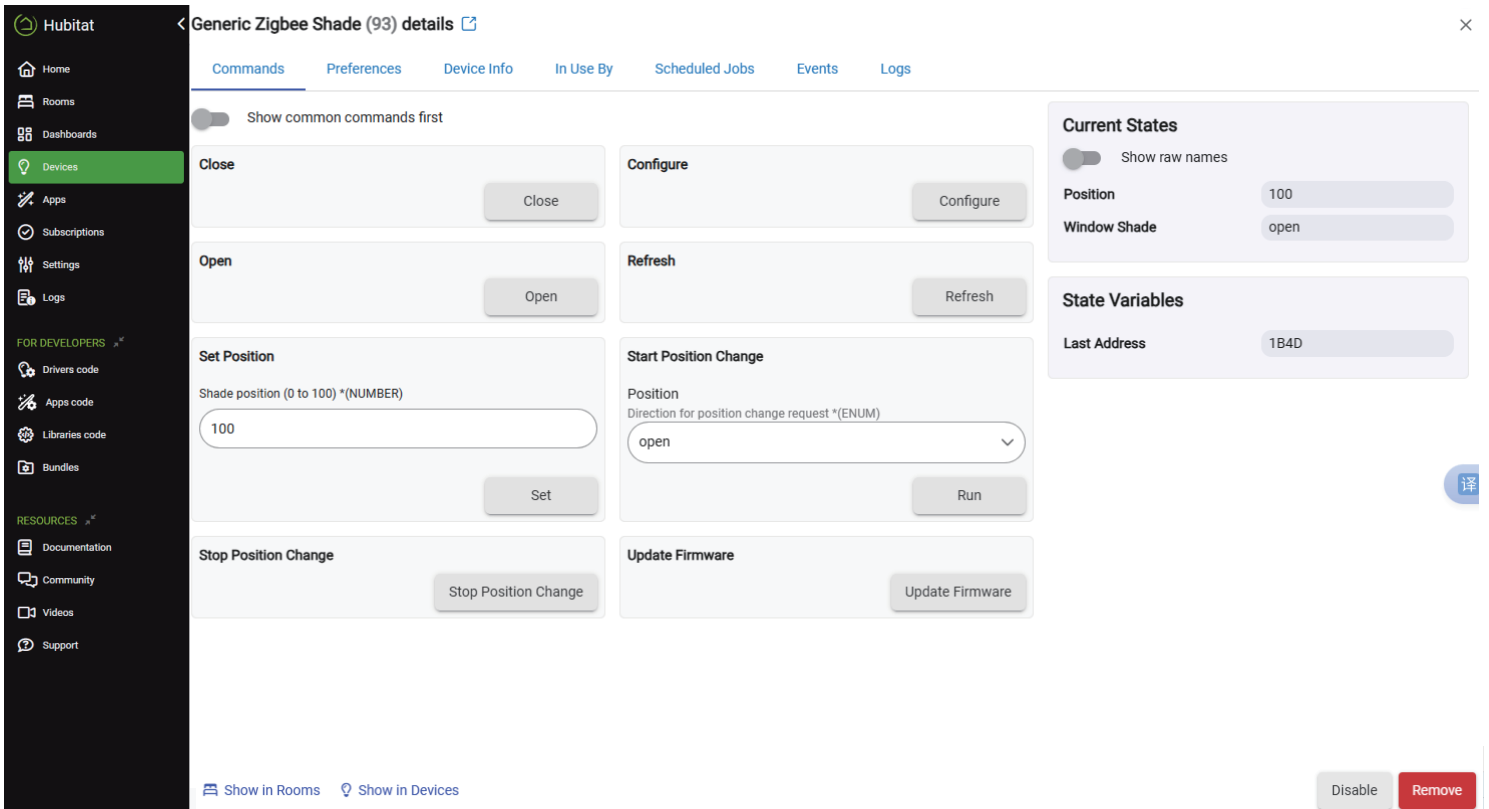
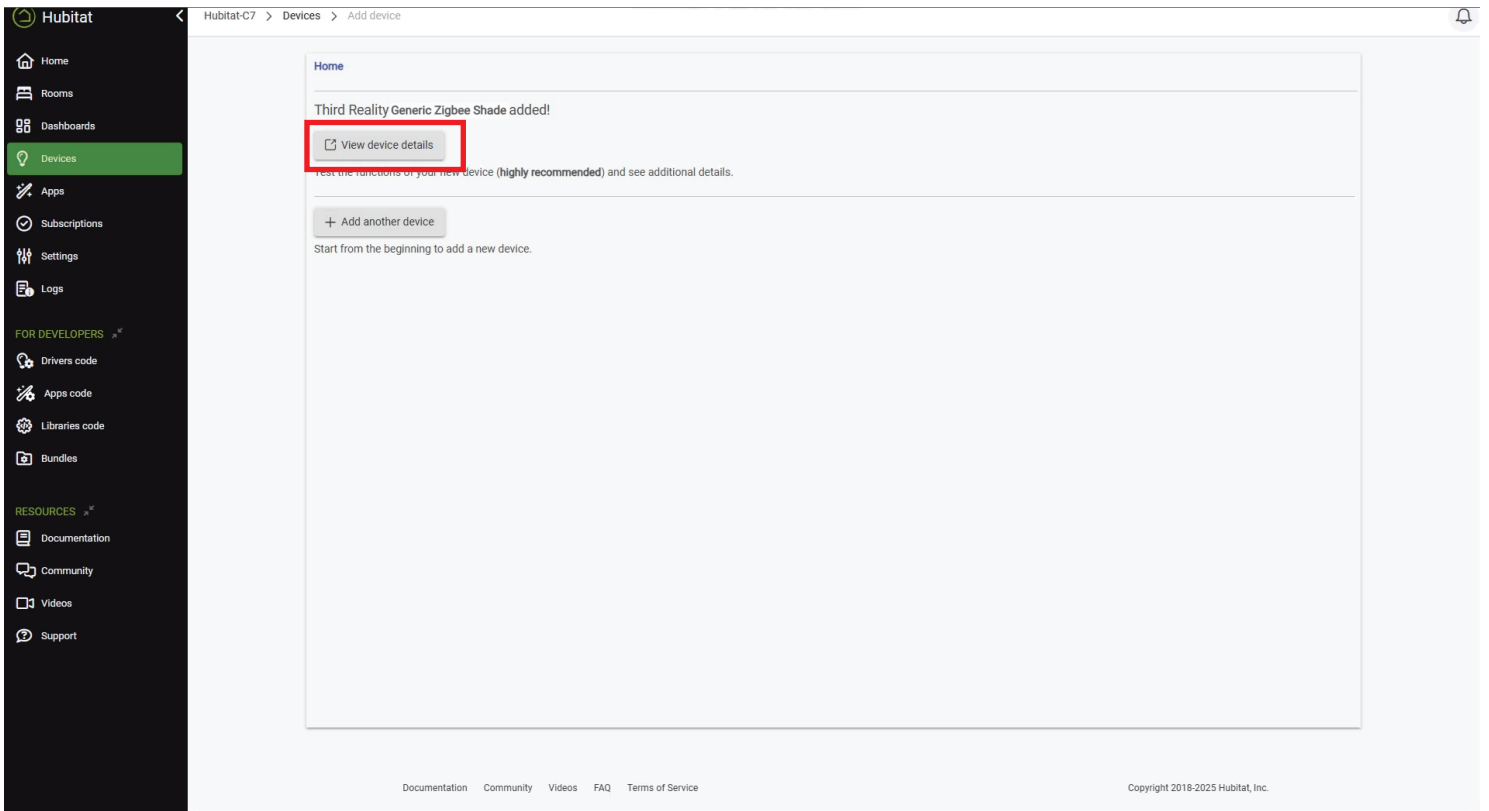
Z-Wave

Matter

Iris V1 Zigbee

Virtual

Documentation Community Videos FAQ Terms of Service Copyright 2018-2024 Hubitat, Inc



Pairing with Home Assistant (Zigbee Home Automation)

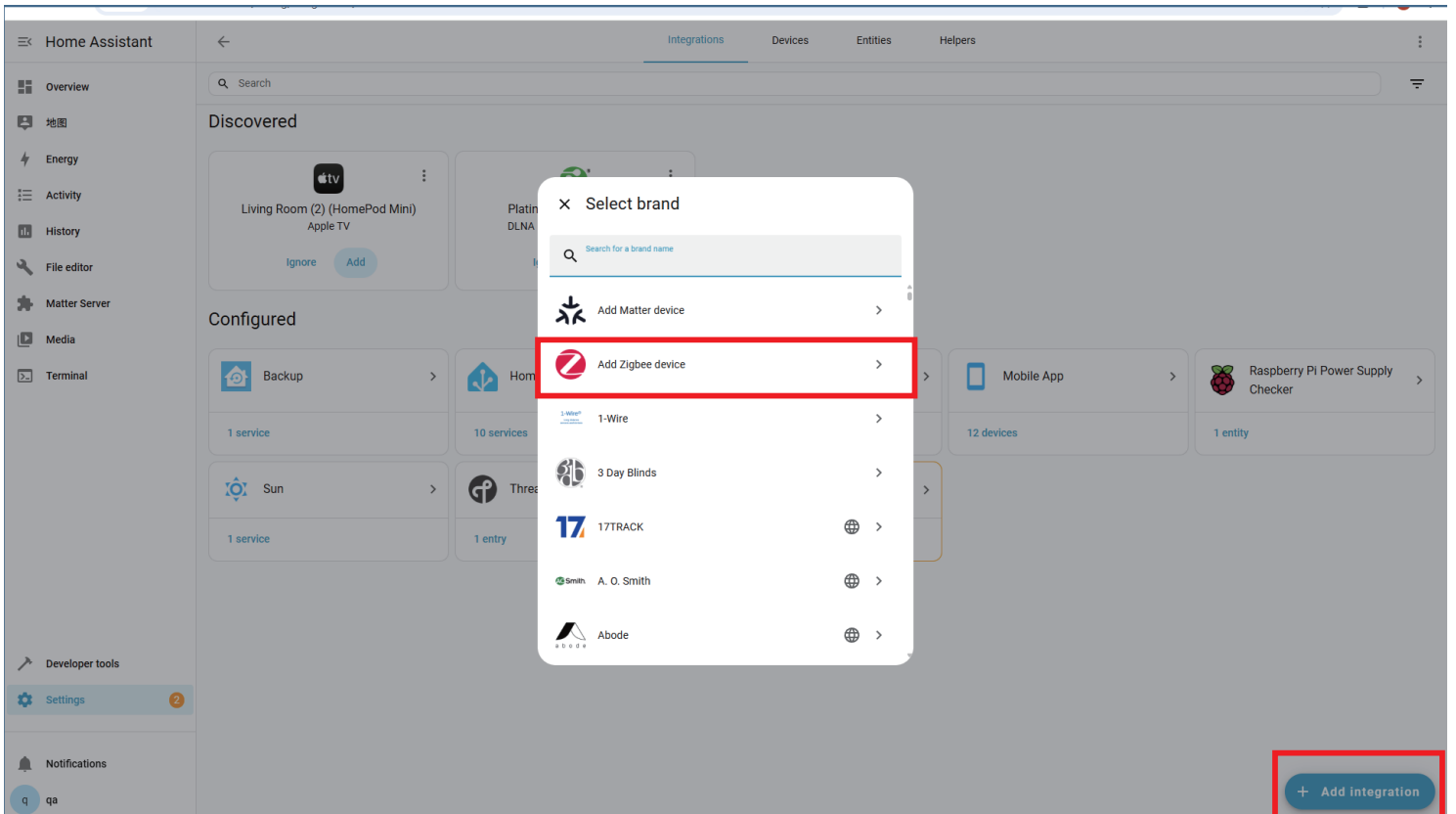
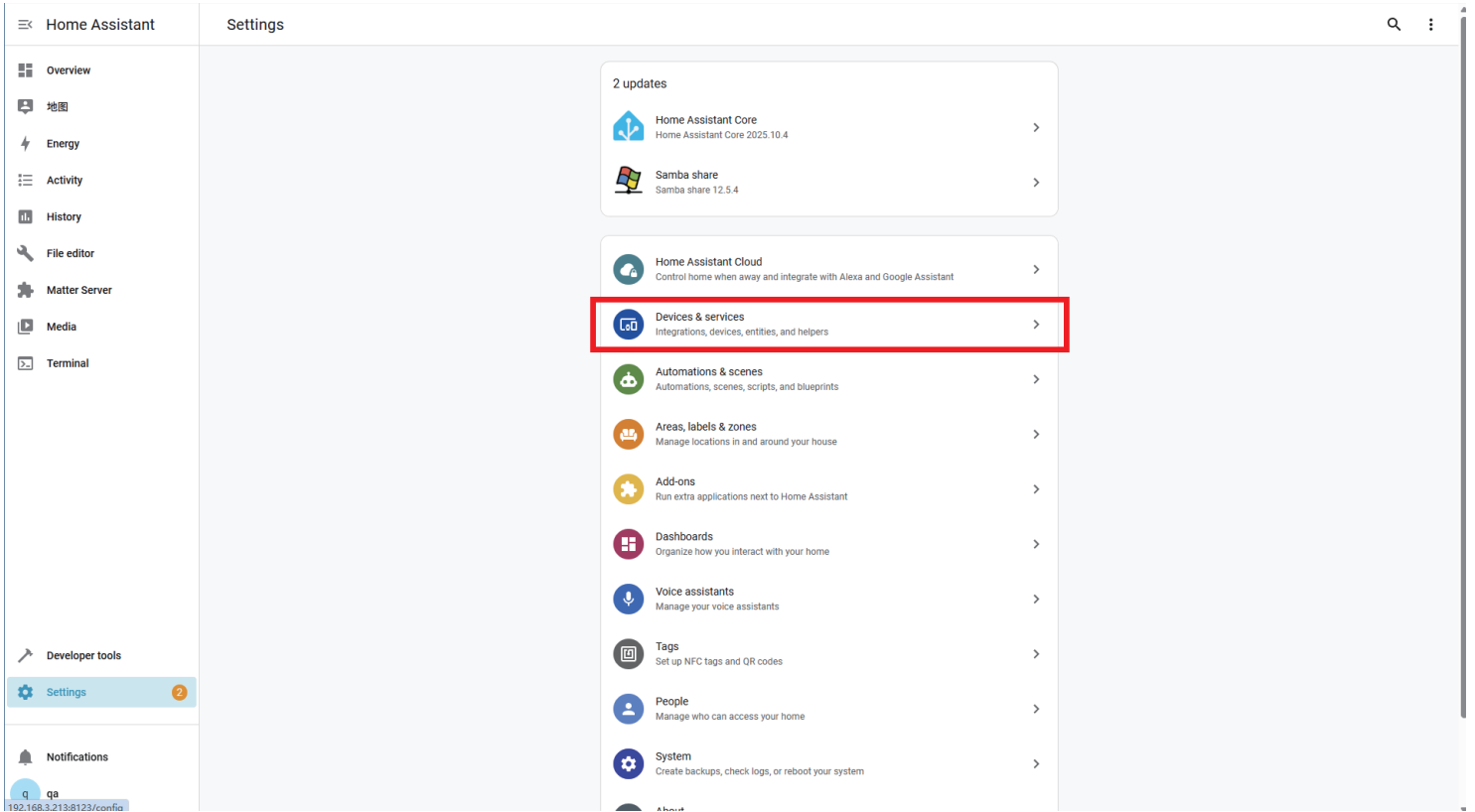


Website: <http://find.hubitat.com/>

Pairing Steps:

1. Long press the setting button of blinds for more than 5 seconds until the LED flashes rapidly in red, indicating that the Smart Blind is in pairing mode.
2. In Zigbee Home Automation, go to “Configuration” page, click “integration”. Then click the “Devices” on the Zigbee item, then click “Add Devices”.
3. After the pairing is successful, it will be shown as "Third Reality, Inc 3RSB015BZ" on the page.
4. Back to "Devices & Services" page, click the device list under the "Hub Smart Home Controller" button, then you can find the Smart Blind added before. Click to enter in the control interface to operate the Smart Blind.
5. You can add "Automated Actions" and check device status on the "Device" page.

Notes: You can also set the curtain cycle on the device details page based on its size. Curtains from 33 to 60 inches can be set to about 300 cycles, and those from 61 to 80 inches can be set to about 200 cycles.



Device	Area	Integration	Manufacturer	Model	Battery
lj onoff test blindgen2	JY	Zigbee Home Automation	Third Reality, Inc	3RSB02015Z	31%
Third Reality, Inc 3RSB02015Z	-	Zigbee Home Automation	Third Reality, Inc	3RSB02015Z	97%
Third Reality, Inc 3RDP01072Z	zhai	Zigbee Home Automation	Third Reality, Inc	3RDP01072Z	-
Third Reality, Inc 3RDP01072Z	-	Zigbee Home Automation	Third Reality, Inc	3RDP01072Z	-
Third Reality, Inc 3RPS01083Z	-	Zigbee Home Automation	Third Reality, Inc	3RPS01083Z	100%
Third Reality, Inc 3RSB228Z	-	Zigbee Home Automation	Third Reality, Inc	3RSB228Z	100%
Third Reality, Inc 3RSP02064Z	zhai	Zigbee Home Automation	Third Reality, Inc	3RSP02064Z	-
Third Reality, Inc 3RSP02064Z	zhai	Zigbee Home Automation	Third Reality, Inc	3RSP02064Z	-
Third Reality, Inc 3RSPU01080Z	zhai	Zigbee Home Automation	Third Reality, Inc	3RSPU01080Z	-
Third Reality, Inc 3RSS009Z	JY	Zigbee Home Automation	Third Reality, Inc	3RSS009Z	-
Third Reality, Inc 3RTHS0224Z	JY	Zigbee Home Automation	Third Reality, Inc	3RTHS0224Z	100%
Third Reality, Inc 3RWS0218Z	JY	Zigbee Home Automation	Third Reality, Inc	3RWS0218Z	-
Third Reality, Inc 3RWS0218Z	JY	Zigbee Home Automation	Third Reality, Inc	3RWS0218Z	-
v48 tset	JY	Zigbee Home Automation	Third Reality, Inc	3RSB02015Z	-

Home Assistant
← Third Reality, Inc 3RSB02015Z

- Overview
- 地图
- Energy
- Activity
- History
- File editor
- Matter Server
- Media
- Terminal
- Developer tools
- Settings 2
- Notifications

Device info

3RSB02015Z
by Third Reality, Inc

Connected via [Conbee II](#)

Firmware: 0x00000031

Zigbee info ▼

- ⊘ Zigbee Home Automation >
- ⚙️ Reconfigure ⋮

Controls

On/off

Roller blinds ↑ ▢ ↓

[Add to dashboard](#)

Activity

- Roller blinds was opened
4:45:00 PM - 32 minutes ago
- Roller blinds is opening
4:44:37 PM - 32 minutes ago
- Roller blinds was opened
4:44:36 PM - 32 minutes ago
- Roller blinds is opening
4:44:08 PM - 33 minutes ago
- On/off turned on
4:44:07 PM - 33 minutes ago
- Roller blinds was opened
4:43:01 PM - 34 minutes ago
- Roller blinds is closing
4:42:30 PM - 34 minutes ago

Configuration

Compensatio... ⬅️ ⬆️ ➡️

Enable/Disable PIR Remote

⊘ Firmware Up-to-date

Limit_position ▢

Total_cycle_tl... 15

[Add to dashboard](#)

Diagnostic

Battery 97%

Curtain types Rollershade

+2 disabled entities

[Add to dashboard](#)

Automations

lj1111 >

Scenes

No scenes have been added using this device yet. You can add one by pressing the + button above.

Scripts

No scripts have been added using this device yet. You can add one by pressing the + button above.

Pairing with Home Assistant (Zigbee2MQTT)



Website: <http://find.hubitat.com/>

Pairing Steps:

1. Long press the setting button of blinds for more than 5 seconds until the LED flashes rapidly in red, indicating that the Smart Blind is in pairing mode.
2. Permit join to start Zigbee pairing in Zigbee2MQTT.
3. After the pairing is successful, it will be shown as "Third Reality, Inc 3RSB015BZ" on the page.
4. Back to "Devices & Services" page, click the device list under the "Hub Smart Home Controller" button, then you can find the Smart Blind added before. Click to enter in the control interface to operate the Smart Blind.
5. You can add "Automated Actions" and check device status on the "Device" page.

Notes: You can also set the curtain cycle on the device details page based on its size. Curtains from 33 to 60 inches can be set to about 300 cycles, and those from 61 to 80 inches can be set to about 200 cycles.

Home Assistant << Zigbee2MQTT

Search Advanced search Entries: 4

Columns: Source Friendly name IEEE Address Model Type LQI Last seen Availability Power source Battery level Battery low Disabled Actions

Friendly name ↑	IEEE Address	Model	LQI	Last seen	Availability	Actions
0x282c02bffe977d9	0x282c02bffe977d9 0x69E5 27109	3RSS009Z Third Reality	192	N/A	Online	
0xa4c1381db99f56c5	0xa4c1381db99f56c5 0x0A52 2642	3RSB228Z Third Reality	168	N/A	Online	
开关	0xffff282c02b9a018 0x7F30 32560	3RSS009Z Third Reality	200	N/A	Online	
v3plug	0x4ce175521cc30000 0x839E 45982	3RSP02064Z Third Reality	184	N/A	Offline	

Permit join

Developer tools

Settings 4

Notifications

qa

192.168.3.86:8123/45df7312 zigbee2mqtt

Home Assistant << Zigbee2MQTT

Search Advanced search Entries: 5

Columns: Source Friendly name IEEE Address Model Type LQI Last seen Availability Power source Battery level Battery low Disabled Actions

Friendly name ↑	IEEE Address	Model	LQI	Last seen	Availability	Actions
0x282c02bffe977d9	0x282c02bffe977d9 0x69E5 27109	3RSS009Z Third Reality	192	N/A	Online	
0x282c02bffe977d9	0x282c02bffe977d9 0x250E 9486	3RSB02015Z Third Reality	140	N/A	Online	
0xa4c1381db99f56c5	0xa4c1381db99f56c5 0x0A52 2642	3RSB228Z Third Reality	168	N/A	Online	
开关	0xffff282c02b9a018 0x7F30 32560	3RSS009Z Third Reality	200	N/A	Online	
v3plug	0x4ce175521cc30000 0x839E 45982	3RSP02064Z Third Reality	184	N/A	Offline	

Permit join

Developer tools

Settings 4

Notifications

qa

permit_join: OK (9wcj7-2)

Home Assistant

Zigbee2MQTT

0x282c02bfffefac79

About Exposes Bind Reporting Settings Settings (specific) State Clusters Groups Scene Dev console

Battery
Remaining battery in %
Null %

State
OPEN CLOSE STOP

Position
Position of this cover
0 25 50 75 100 0 100 100 %

Action
Triggered action (e.g. a button click)
N/A

Linkquality
Link quality (signal strength)
140 lqi

Overview
地图
Energy
Logbook
History
File editor
Media
Terminal
To-do lists
Zigbee2MQTT
Developer tools
Settings
Notifications
qa

Dashboard
Devices
Groups
OTA
Touchlink
Network
Logs
Settings
Frontend settings
Permit join
en
Contribute

Troubleshooting

1. Factory Reset

Press and hold the setting " □ " button of blinds for more than 5 seconds until the LED light flashes rapidly in red, indicating that the Smart Blind is in pairing mode. Every time you factory reset the Smart Blind, your preset bottom position will be reset to default (74"), you need to reset your desired bottom position.

2. Fail to pair with Echo

Make sure your Echo Speaker is compatible with Smart Blind (including Echo (4th Gen), Echo Plus (1st Gen and 2nd Gen), Echo Show 10 (2nd Gen and 3rd Gen) and Echo Studio) and updated to the latest version.

- Please ensure your Echo devices are setup before adding the Smart Blind.
- Reboot the Echo speaker by unplugging the power and plugging it back in, then try to pair the Smart Blind with it again.
- Factory reset the Echo speaker (Press and hold the Action button for 25 seconds. The light ring will pulse orange, then turn off. Wait for the light ring to turn back on and turn blue. The light ring then turns orange again and the device enters the setup mode), then try to pair the Smart Blind with it again.

3. Smart Blind is not responding after pairing with Echo device

- Check the LED indicator status of the smart blind, blinking once every 3 seconds meaning it is offline, please reboot the Echo speaker and factory reset the Smart Blind, then pair the Smart Blind with the Echo speaker.
- If still not work, please try to deregister the Echo speaker and register back in, then try to pair the Smart Blind with it.

4. How to change the bottom position of the Smart Blind

Press the UP button and let the Smart Blind retract to the highest position, now the Smart Blind returns to the original zero percent. Press the DOWN button to let the Smart Blind extend, stop the bottom rail at your desired position by pressing the setting/stop button. Now hold up the bottom sensor with your finger first, then press the DOWN button, after that release the DOWN button first, then release the bottom sensor, now you have set this position as the preset bottom position, the Smart Blind will stop at this position automatically next time when extending.

5. The "up" and "down" buttons of Smart Blind reverse to the actual movement

When this happens, press the "Up" button and let the Smart Blind move to the lowest position. After it reaches the lowest position, it will continue moving to the highest position. Meanwhile, the "Up" and "Down" button will correspond with the actual direction of moving.

6. Press button no response after installation

Please confirm whether the batteries are installed correctly or whether they are fully charged.

7. Height Adjustment Function

A very user-friendly feature allows you to fine-tune the left and right sides of the curtain bottom, so it fits perfectly along the window sill.

To adjust manually:

- Press and hold both the “Up” and “Down” buttons for more than 3 seconds until the blue indicator light stays on, then release the buttons. The curtain will enter left/right height adjustment mode.
- Press “Up” or “Down” to adjust each side as needed.
- After the adjustment is completed, the system will automatically exit the adjustment mode.
- You can also press and hold both “Up” and “Down” buttons again for more than 3 seconds to exit the mode manually.
- You can also make these adjustments directly through the Third Reality app.

8. Notes on Battery Level

- When the curtain starts to move more slowly or cannot open or close fully, please recharge the battery in time.
- When the battery level drops to 0%, the curtain can only move downward and cannot move upward.

9. Battery shows 100% after installation, but actual power is insufficient.

- For optimal performance, please fully charge the product prior to initial use. Because the system cannot directly check the battery level, it cannot show the remaining power accurately. Instead, the battery life is estimated by the number of times the curtain opens and closes.
- Please confirm if the shortened battery life is caused by excessive daily use. Under normal circumstances, if you use the curtain once a day, it needs to be recharged every 6 months; if twice a day, it needs to be recharged every 3 months.

FCC Regulatory Conformance

This device complies with part 15 of the FCC rules. Operation is subject to the following two conditions: (1) this device may not cause harmful interference, and (2) this device must accept any interference received, including interference that may cause undesired operation.

Changes or modifications not expressly approved by the party responsible for compliance could void the user's authority to operate the equipment.

NOTE: This equipment has been tested and found to comply with the limits for a Class B digital device, pursuant to part 15 of the FCC Rules. These limits are designed to provide reasonable protection against harmful interference in a residential installation.

This equipment generates uses and can radiate radio frequency energy and, if not installed and used in accordance with the instructions, may cause harmful interference to radio communications. However, there is no guarantee that interference will not occur in a particular installation. If this equipment does cause harmful interference to radio or television reception, which can be determined by turning the equipment off and on, the user is encouraged to try to correct the interference by one or more of the following measures:

- Reorient or relocate the receiving antenna.
- Increase the separation between the equipment and receiver.
- Connect the equipment into an outlet on a circuit different from that to which the receiver is connected.
- Consult the dealer or an experienced radio/TV technician for help important announcement.

NOTE: The manufacturer is not responsible for any radio or TV interference caused by unauthorized modifications to this equipment. Such modifications could void the user's authority to operate the equipment.

RF Exposure

This equipment complies with FCC radiation exposure limits set forth for an uncontrolled environment.

This equipment should be installed and operated with minimum distance 20cm between the radiator and your body.

This transmitter must not be co-located or operating in conjunction with any other antenna or transmitter.

Limited Warranty

For limited warranty, please visit <https://3reality.com/faq-help-center/>
For customer support, please contact us at info@3reality.com or visit www.3reality.com.

For questions on other platforms, visit the corresponding platform's application/support platform.